

# Coherent Campus

# LANDSCAPE PALETTE STANDARD SPECIFICATION



## **Introduction**

The aim of this document is to provide a definitive guide to the approved palette of landscape street furniture and paving materials which are to be used in all future projects, which will enable ESS to progress towards a vision 'to create and enhance a campus which will be a coherent, recognisable, sustainable, pedestrian-friendly and welcoming place'.

## Contents

### **Paving Materials**

- Granite
- Sandstone
- Tegula Concrete Block
- Asphalt
- Conservation Kerb

### **Seating**

Contemporary

- Cast Iron/Timber

Heritage

- Timber

### **Cycle storage**

- Racks
- Compounds
- Shelters
- Lockers

### **Planters**

Contemporary

- Stainless Steel/Wood

### **Litter Bins**

Contemporary

- Stainless Steel

Heritage

- Cast Iron

- Stainless Steel Recycling Units

### **Bollards**

- Stainless steel
- Stainless Steel—Illuminated

### **Handrails and Balustrades**

- Stainless Steel

### **Street Lighting**

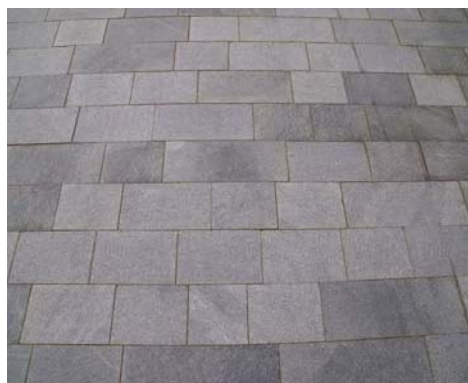
- Stainless Steel

### **Drainage**

- Channel
- Man hole covers

## Granite Paving

### 1. Appearance and General Specification



- Colour: Silver grey
- 80mm thickness x 340mm width in random lengths
- Finish: Fine picked/brush hammered
- Bond Pattern: Random Course, Stretcher Course
- Freeze/Thaw resistance class: F1
- Arrises: Bevelled 2mm
- Diagonal deviation class: D2.
- Thickness deviation class: T2.
- Plan dimension deviation class: P2
- Sub-base to be specified for the specific location and proposed use, subject to local site investigate. Base must be solid and robust to provide long lasting wear and tear without movement to block materials.

Uniting both appealing aesthetics and durable performance, Granite Paving is an extremely versatile product, enabling long term durability for intended applications .

### 2. Key Features:

- **Aesthetics:** Visually appealing with ability to enhance areas
- **Strength:** Extremely hard wearing, uniform surface
- **Durability:** Forms a hardwearing surface with an exceptionally long lifespan. Resistant to frost and weathering
- **Slip-Skid Resistance:** Uniform surface finish, offers excellent slip-skid resistance, even in wet conditions, for pedestrians.

### 3. Locations

Primarily limited use at change of levels

#### Example locations that product is currently in use

Percy Quad

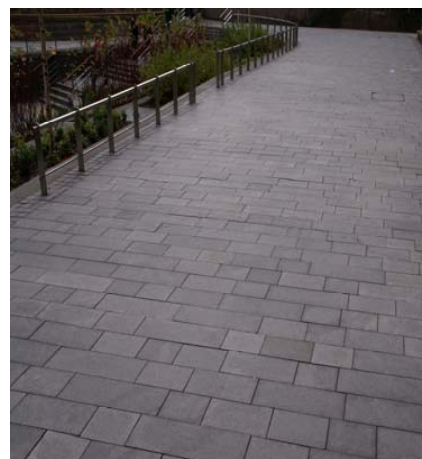
### 4. Contact Information

Supplier suggestion:

Stonepave UK Ltd, Alma Park, Wibtoft,  
Lutterworth, Leics, LE17 5BE

Tel: 01455 222 288

<http://www.Stonepaveuk.com/>



## Sandstone Paving

### 1. Appearance and General Specification



- Smooth sawn sandstone paving.
  - Colour: Yellow/buff with various tones and shades available
  - Various sizes and thickness as examples on campus
  - Tight joints
  - Dressed Stone
- Sub-base to be specified for the specific location and proposed use, subject to local site investigate. Base must be solid and robust to provide long lasting wear and tear without movement to block materials.

Aesthetically appealing with a natural appearance. Will enhance heritage areas and landscapes.

### 2. Key Features:

- **Aesthetics:** Visually attractive providing a formal surface finish to the historic areas of the campus.
- **Strength:** Hard wearing and uniform surface especially when used in level pedestrian areas.
- **Durability:** Relatively hard wearing with a resistance to weathering and low friability.

### 3. Locations

To be used for Heritage areas where a natural appearance is required

#### Example locations that product is currently in use

Student Forum

Old Quadrangle

#### 4. Contact Information

Supplier suggestion:  
locally

To be sourced

ESS Contact:



# Marshall's Tegular Concrete Sett Paving

## 1. Appearance and General Specification



- Colour: Burnt Ochre (Charcoal used in limited areas)
- 160 Gauge
- 60/80mm thickness in three sizes
  - 120 x 160
  - 160 x 160
  - 240 x 160
- Integral Spacers
- Bond Pattern: Herringbone pattern (check with manufacturer in road traffic areas)
- Joints to be cement bond
- Compliant to BS EN 1338:2003.
- Sub-base to be specified for the specific location and proposed use, subject to local site investigation. Base must be solid and robust to provide long lasting wear and tear without movement to block materials.

Uniting both appealing aesthetics and durable performance, Tegular Block Paving is an extremely versatile product, enabling the optimum surfacing solution for a broad spectrum of applications.

## 2. Key Features:

- **Aesthetics:** Through rich colour, form and texture, it is visually appealing with ability to frame and accent the finest architecture, and to realise and enhance landscapes with a traditional or contemporary feel.
- **Strength:** Combining the inherent strength of each individual unit with the interlock generated between blocks and the flexibility of the surface course, it creates a paved surface that allows the highest level of loading to be dissipated laterally between units and down through the sub base.
- **Durability:** With well-established examples nationwide, concrete sett paving forms a hardwearing surface with an exceptionally long lifespan. Concrete Block Paving is resistant to frost damage, most chemicals, fuels and oils.
- **Reinstatement:** When maintenance of underlying services are required, Tegular paving can be quickly and efficiently removed and then reinstated to provide the same surface finish prior to works – free from scars and ready for immediate traffic.
- **Slip-Skid Resistance:** With its joint profile and surface finish, Tegular paving offers excellent slip -skid resistance, even in wet conditions, for pedestrian and vehicular traffic alike.
- **Whole-Life Costs:** Over the design life of a pavement, concrete block paved surfaces are appreciably more cost effective than other surfacing materials. With the inherent flexibility and strength in the surface, infrequent and simple maintenance, ease of reinstatement following works, recycling capability, together with the aesthetic benefit, Tegular paving offers enhanced long term value when considering whole life cost.

## 3. Locations

To be used for publically visible areas, service/delivery areas and pedestrian walkways.

**Example locations that product is currently in use** Claremont  
King's Road – western end at St. Thomas Street should be  
used a preferred example

#### 4. Contact Information

Manufacturer:

Supplier suggestion:

Landscape House, Premier Way,

Lowfields Business Park, Elland HX5 9HT

Tel: 01422 312000

<http://www.marshalls.co.uk/>

Marshalls Mono Ltd,





# Asphalt

## 1. Appearance and General Specification



- Colour: Black
- Exact specification to be provided for intended application
- Sub-base to be specified for the specific location and proposed use, subject to local site investigation. Base must be solid and robust to provide long lasting wear and tear without movement to block materials.

Black bitumen based surface that is hardwearing and resilient.

## 2. Key Features:

- Hardwearing
- Long life expectancy

## 3. Locations

To be used for service areas as applicable

**Example locations that product is currently in use**  
**King George VI Rear Car Parks**

## Conservation Kerb



- Colour: Silver Grey
- Compliant to BS EN 1340:2003
- Various sizes available, including Straight, curved, dropped kerb and chamfered
- Sub-base to be specified for the specific location and proposed use, subject to local site investigate. Base must be solid and robust to provide long lasting wear and tear without movement to block materials.

### 2. Key Features:

- Precision manufactured
- Hardwearing and durable
- 48.3% recycled material used in the product construction

### 3. Locations All Areas

**Example locations that product is currently in use**

#### 4. Contact Information

Supplier suggestion: Marshalls Mono Ltd,  
Landscape House, Premier Way,  
Lowfields Business Park, Elland HX5 9HT  
Tel: 01422 312000  
<http://www.marshalls.co.uk/>



## BXMW Sheffield/Harrogate Cycle Racks

### 1. Appearance and General Specification



Front of house:

- Stainless Steel
- Root fixing, 300mm below ground
  - Various sizes available
- Finish: Matte Satin Finish
- Galvanised Steel with appropriate finish
  - Root fixing or bolt down
  - Various sizes available

Robust design with good life expectancy

### 2. Key Features:

- Robust and durable design
- Corrosion resistant Stainless Steel or galvanised steel with appropriate finish
- Modern design and look
- Cycle racks to be at 800mm centres

### 3. Locations

To be used for all areas except Heritage

**Example locations that product is currently in use**

**Harrogate type—Percy Quad**

**Sheffield type—Medical School**

## Contact Information

Manufacturer:

Supplier suggestion:  
Industrial Estate, Chesterton,

Broxap, Rowhurst

Newcastle-under-Lyme, Staffordshire ST5 6BD

Tel: 01782 571 666

<http://www.Broxap.com/>



## Cycle shelter



- Wardale sides + Newcastle canopy
  - Appolo Junior Shelter
- Hot dipped galvanised to BS EN ISO 1461:1999
  - Colour RAL 5013
  - Various sizes available

### 2. Key Features:

- Robust and durable
- Welded end frames from heavy duty steel section with anti tamper high strength bolts □□
- Vandal resistant features
- Clearview PET Sheeting
- Contemporary shelter ideal for cycle secure storage allowing all round visibility.

### 3. Locations

To be used for all areas

**Example locations that product is currently in use**  
**Medical School**

### 4. Contact Information

Manufacturer:

Supplier suggestion: Broxap, Rowhurst Industrial Estate, Chesterton,  
Newcastle-under-Lyme, Staffordshire ST5 6BD  
Tel: 01782 571 666  
<http://www.Broxap.com/>



## Marshall's Sineu Graff Rendezvous Seating



- Cast iron or steel construction with hardwood
- Range of models available including benches and seats
- Armrest option on certain models

With its modern design and more assertive lines, the Sineu Graff Rendezvous Range features seats and benches constructed from cast iron or steel with hardwood.

### 2. Key Features:

- Aesthetically pleasing
- Modern design
- Wood element adds colour and warmth, enhancing surrounding landscape
- Robust and durable
- Low Maintenance
- Various models available
- End and/or intermediate armrest options for certain models □□ Wood element sourced from sustainable resources

### 3. Locations

To be used in all areas except Heritage Areas.

#### Example locations that product is currently in use

King's Road – Eastern end



#### 4. Contact Information

Manufacturer:

Supplier suggestion:

Landscape House, Premier Way,

Lowfields Business Park, Elland HX5 9HT

Tel: 01422 312000

<http://www.marshalls.co.uk/>

Marshalls Mono Ltd,



## Lindsey Teak Balmoral Bench



- Hardwood construction
- Range of benches available
- Range of sizes available

With a Classic design, the Balmoral seating range from Lindsey Teak provides a top quality range of seating to complement heritage areas within the University.

### 2. Key Features:

- Aesthetically pleasing
- Warm, traditional design
- Wood element adds colour and warmth, enhancing surrounding landscape
- Robust and durable
- Good life expectancy
- Low Maintenance
- Various models available
- End and/or intermediate armrest options for certain models
- Wood element sourced from sustainable resources □□ Repairable in house

### 3. Locations Heritage Areas.

#### Example locations that product is currently in use

Quadrangle  
Arches on King's Raod

### 4. Contact Information Manufacturer:

Supplier suggestion:  
North Industrial  
Croydon, Surrey

Lindsey teak, Jati Ltd, Unit 6, Coulsdon  
Estate, Station Approach, Coulsdon,

CR5 2NR  
Tel: 0845 6789 891  
<http://www.Lindseyteak.com/>



## Osmos S39 Planter



- 316 Grade Stainless Steel Top rim
- Treated Iroko hardwood exterior
- Galvanised steel internal box
  - Height 580—1000mm
  - Width 800—1500mm
  - Depth 800—1500mm

(For actual specification refer to the ESS Contact below)

Modern appearance with durable performance.

### 2. Key Features:

- Attractive appearance
- Sleek and distinctive design
- Robust and durable
- Low Maintenance
- Wood element sourced from sustainable resource

### 3. Locations

All areas except Heritage areas

#### Example locations that product is currently in use

King's Road – eastern end

### 4. Contact Information

Manufacturer:

Supplier suggestion:  
Road Industrial Park, Newbridge  
Road, Naas, Co. Kildare, Ireland  
Tel: 0353 4589 9802  
<http://www.omos.ie>

Omos Ltd, U1 Military



## Broxap BX 2585-SSP Derby Eros Stainless Steel Litter Bin



- 2mm 304 Grade Stainless Steel
- Perforated with 240 grit grained finish
- 0.6mm galvanised steel liner
- 80 and 115 litre capacities
  - Lockable
- Ash tray to those on campus perimeter

Modern, contemporary appearance with durable performance.

### 2. Key Features:

- Heavy duty and robust
- Ergonomically designed with contemporary style posting apertures
- Modern, attractive appearance
- Newcastle University Logo
- Large aperture enabling larger items such as pizza boxes to be accepted
- Low maintenance
- Hi Specification for increased durability and long life expectancy

### 3. Locations

All areas except heritage areas

#### Example locations that product is currently in use

To be installed in near future

### 4. Contact Information

Manufacturer:

Supplier suggestion:

Broxap, Rowhurst Industrial Estate, Chesterton,  
Newcastle-under-Lyme, Staffordshire ST5 6BD  
Tel: 01782 571 666  
<http://www.Broxap.com/>



## Broxap BX 2319 round medium Cast Iron Litter Bin



- 250 grade Cast Iron to BS EN 1561:1997
- Black finish with gold coloured LITTER lettering and banding
- Heavy Duty
- Galvanised sheet metal liner
- 90 litre capacity □□ Lockable

Classic appearance with durable performance.

### 2. Key Features:

- Heavy duty and robust
- Classic design
- Newcastle University Logo
- Large aperture enabling larger items such as pizza boxes to be accepted
- Low maintenance
- Hi Specification for increased durability and long life expectancy

### 3. Locations Heritage areas

**Example locations that product is currently in use**

### 4. Contact Information

Manufacturer:

Supplier suggestion: Broxap, Rowhurst Industrial Estate, Chesterton,  
Newcastle-under-Lyme, Staffordshire ST5 6BD  
Tel: 01782 571 666  
<http://www.Broxap.com/>

## Wybone Torpedo Triple Hood Recycling Unit



- 304 grade Stainless Steel
  - Smooth finish
  - Heavy duty
- Galvanised sheet metal liners
- 162 litre capacity □□ Security Locks

Contemporary appearance clearly labelled compartments, long term performance.

### 2. Key Features:

- Heavy duty and robust
- Vandal and corrosion resistant 1.5mm Stainless Steel
- Contemporary design
- Large capacity liners
- Internal sheet partition guarantees separation
- Low maintenance
- Clearly labelled compartments
- Newcastle University Logo
- Hi Specification for increased durability and long life expectancy

### 3. Locations

All areas except heritage

**Example locations that product is currently in use**  
**Stephenson Building Percy Building**

### 4. Contact Information

Manufacturer:

Supplier: Wybone Ltd, Mason Way, Platts Common  
Ind. Estate, Hoyland, Barnsley, South  
Yorkshire, S74 9TF



## Broxap BX 47 Sheffield Bollard



- Stainless Steel
- Root fixed
- Height above ground 1000mm
- 150mm Colour Visibility Band
- Various sizes available up to 204mm □□ Either 2mm or 3mm gauge

### Stylish range of attractive stainless steel bollards

#### 2. Key Features:

- Robust and durable
- Corrosion resistant Stainless Steel
- Matt Satin Finish
- Colour Visibility Band—University blue (Ref: Pantone 541)
- Flat Top Finish
- Root fixing, 300mm below ground
- Height above ground 1000mm
- Product Reference BX47 0140 00

#### 3. Locations

All areas except heritage

#### Example locations that product is currently in use



#### 4. Contact Information

Supplier suggestion:  
Industrial Estate, Chesterton,

Broxap, Rowhurst

Newcastle-under-Lyme, Staffordshire ST5 6BD

Tel: 01782 571 666

<http://www.Broxap.com/>



## Geo Illuminated Bollards



- 316 grade Bead Blasted Stainless Steel body
- 316 grade Brushed Stainless Steel Toe Cap
  - Glass MTR Rings
  - Clear PMMA Diffuser
    - IP65 rated
- Available in various heights □□ Available in various diameters
  - Available with various lamp options

Contemporary appearance with illumination. Hi specification to give robust and durable long term performance

### 2. Key Features:

- Robust and durable
- Corrosion resistant Stainless Steel
- Contemporary design
- Hi Specification for increased durability and long life expectancy

### 3. Locations

All areas except heritage

**Example locations that product is currently in use**

### 4. Contact Information

Supplier suggestion:

Woodhouse UK Ltd, Spa Park, Leamington Spa,  
Warwickshire CV31 3HL  
Tel: 01926 314 313



## Stainless Steel Handrail



- Type 316 Stainless Steel
- Hardwood hand rail element available
- Specification to be provided for specific application

Description.

### 2. Key Features:

- Corrosion resistant Stainless Steel
  - Contemporary look
  - Wooden element for DDA compliance
- Picture colour

### 3. Locations

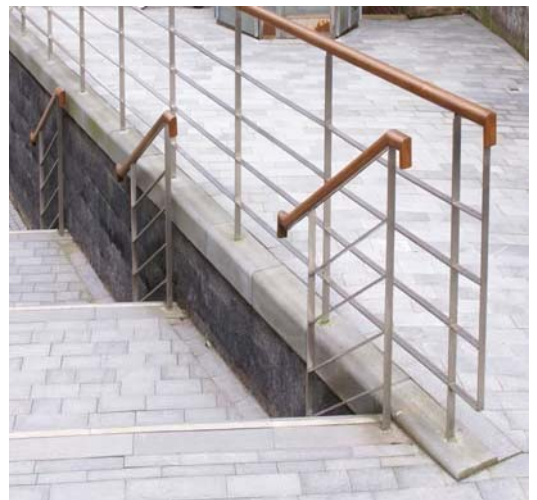
To be used for all areas

#### Example locations that product is currently in use

Stephenson Building

Percy Quad

Hadrain Centre



## Manhattan Lantern



- Lamp Height 810mm
- Lamp Width 800mm
- Stainless Steel Column Mounted

### Stylish and attractive Street lighting

#### 2. Key Features:

- Robust and durable
- Corrosion resistant Stainless Steel column
- Luminaire has RAL7016 Anthracite finish
- Medium Polycarbonate Glazing Cone
- 70w CDM-T Lamp G12 Lampholder
- Column 5M Abacus Stainless Steel Base Hinged Raising & Lowering 76mm top with flange plate mounting.
- Anti-Glare Shield
- Can be Flange plate or root mounted
- Fold down option for easy maintenance

#### 3. Locations

All areas except heritage

#### Example locations that product is currently in use

King's Road

#### 4. Contact Information

Supplier suggestion:

01992 474 600

DW Windsor  
DW Windsor UK Operations Centre, Pindar Road,  
Hoddesdon, Hertfordshire. EN11 0DX  
<http://www.dwwindsor.co.uk/>

Tel:



**Drains**

Slot drains to be avoided

Channel drains are the preferred solution

Rodding points to be provided at both ends of each run, all changes of direction and a maximum length of 15m

**Manhole covers**

Cast iron covers with lifting rod points

No inset paving type